

# Clean Room Equipment & Furniture

**Contact:**

**[SMW](#)**

**Austin, TX**

**(512)926-8400**

**[sales@sm-w.com](mailto:sales@sm-w.com)**

**Catalog - SMW14**

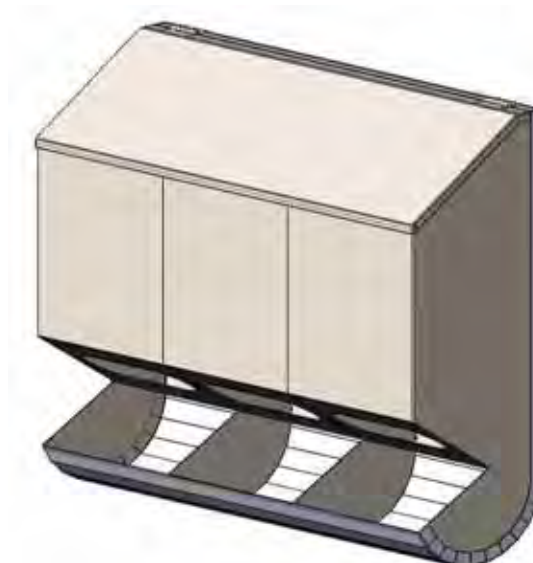
# Clean Room Equipment & Furniture

|  |    |
|--|----|
| Disposable Dispensers .....              | 3  |
| Sterile Glove Dispensers.....            | 4  |
| Eye Glass Dispensers.....                | 4  |
| Gown and Hood Dispensers.....            | 5  |
| Disposal / Recycle Cabinets.....         | 5  |
| Wipes & Bottle Holders.....              | 6  |
| Tray & Shelf Units.....                  | 6  |
| Clean Room Benches.....                  | 7  |
| Rod Type Benches .....                   | 8  |
| Stainless Steel Stools .....             | 9  |
| Heavy Duty Tables .....                  | 10 |
| Drawer Units.....                        | 11 |
| Keyboard Holders.....                    | 12 |
| Mobile Laptop Workstations .....         | 12 |
| Flat Screen - Keyboard Workstations..... | 12 |
| Gown Racks.....                          | 13 |
| Cleanroom Hanger.....                    | 14 |
| Waste Receptacles .....                  | 14 |
| Gownroom Feeder Cabinets .....           | 15 |
| Wipe Down Tables .....                   | 15 |
| Modular Bootie Racks .....               | 16 |
| Storage Cabinets .....                   | 17 |
| Soiled Garment Cabinets .....            | 19 |
| Cleanroom Cleaners Cabinets.....         | 19 |
| 12 Drawer Cabinet.....                   | 20 |
| Cabinet with Drawers .....               | 20 |
| Shelving Units.....                      | 22 |
| Reticle Mask Racks.....                  | 23 |
| WIP Racks .....                          | 24 |
| Wafer Transport Carts.....               | 25 |
| Tool Carts & Cabinets .....              | 26 |
| Step Ladders.....                        | 27 |
| Carts .....                              | 28 |
| Particle Counter Transport Carts .....   | 29 |
| Chemical Transport Carts .....           | 29 |

# Clean Room Equipment & Furniture

## Disposable Dispensers

Wall-mounted dispensers are designed to provide efficient dispensing and storage of Gloves, Hairnets, Facemasks, Booties, etc. Units are electropolished 304 stainless steel and each compartment is approximately 200mm x 200mm x 600 mm (or 1000 mm) tall.



### Ordering Information

Part number example: DD-n-hhhh-t

- n is number of compartments.
- hhhh is the height in mm(e.g. 0600 for 600 mm).
- t is the adder for top configuration (add S for sloping top).

| <b>Disposable Dispensers</b> |                     |                   |                     |                   |
|------------------------------|---------------------|-------------------|---------------------|-------------------|
| <b>Part Number</b>           | <b>Compartments</b> | <b>LxWxH (mm)</b> | <b>LxWxH (inch)</b> | <b>Top Config</b> |
| DD-1-0600                    | 1                   | 200x205x600       | 8x8x24              | Flat              |
| DD-2-0600                    | 2                   | 400x205x600       | 16x8x24             | Flat              |
| DD-3-0600                    | 3                   | 600x205x600       | 24x8x24             | Flat              |
| DD-4-0600                    | 4                   | 800x205x600       | 32x8x24             | Flat              |
| DD-1-1000                    | 1                   | 200x205x1000      | 8x8x39              | Flat              |
| DD-2-1000                    | 2                   | 400x205x1000      | 16x8x39             | Flat              |
| DD-3-1000                    | 3                   | 600x205x1000      | 24x8x39             | Flat              |
| DD-4-1000                    | 4                   | 800x205x1000      | 32x8x39             | Flat              |
| DD-1-0600-S                  | 1                   | 200x205x600       | 8x8x24              | Sloped            |
| DD-2-0600-S                  | 2                   | 400x205x600       | 16x8x24             | Sloped            |
| DD-3-0600-S                  | 3                   | 600x205x600       | 24x8x24             | Sloped            |
| DD-4-0600-S                  | 4                   | 800x205x600       | 32x8x24             | Sloped            |
| DD-1-1000-S                  | 1                   | 200x205x1000      | 8x8x39              | Sloped            |
| DD-2-1000-S                  | 2                   | 400x205x1000      | 16x8x39             | Sloped            |
| DD-3-1000-S                  | 3                   | 600x205x1000      | 24x8x39             | Sloped            |
| DD-4-1000-S                  | 4                   | 800x205x1000      | 32x8x39             | Sloped            |

# Clean Room Equipment & Furniture

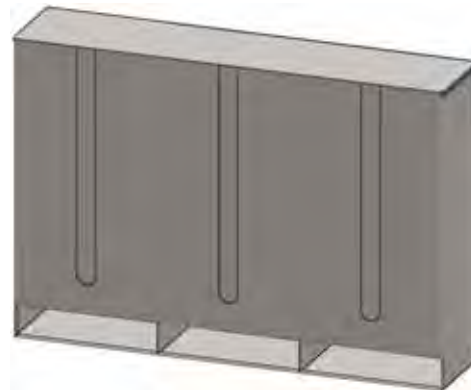
## Sterile Glove Dispensers

Wall mounted dispensers are designed to provide efficient dispensing and storage of sterile packaged gloves. Units are electropolished 304 stainless steel and each compartment is sized to fit packages. Units may have multiple slots and may stack packages.

### Ordering Information

Part number example: SGD-x-y-ssss-t

- x is number of compartments.
- y is the stack height (in number of packages).
- ssss is the size of the packages in inches (e.g. 0607 for 6x7 or 1106 for 11x6).
- t is the adder for top configuration (add S for sloping top).



### Sterile Glove Dispensers

| Part Number  | Cmpprt | Stk Ht | LxWxH (mm)  | LxWxH (inch) | Top  |
|--------------|--------|--------|-------------|--------------|------|
| SGD-4-6-0607 | 4      | 6      | 680x205x600 | 27x8x24      | Flat |
| SGD-3-6-1106 | 3      | 6      | 870x180x600 | 34.5x7x24    | Flat |

## Eye Glass Dispensers

Wall mounted dispensers are designed to provide efficient dispensing and storage of eye glasses or other similar sized items. Units are electropolished 304 stainless steel with clear fronts.

### Ordering Information

Part number example: EGD-ll-ww-hh

- ll is length of the dispenser (cm).
- ww is width of the dispenser (cm).
- hh is height of the dispenser (cm).



### Eye Glass Dispensers

| Part Number  | LxWxH (mm)  | LxWxH (inch) |
|--------------|-------------|--------------|
| EGD-30-20-40 | 300x200x400 | 12x8x16      |

# Clean Room Equipment & Furniture

## Gown and Hood Dispensers

Wall mounted dispensers are designed to provide efficient dispensing and storage of folded gowns or wrapped gowns and hoods. Units are electropolished 304 stainless steel and units for folded items will have partially open fronts to facilitate loading of folded garments.



### Ordering Information

Part number example: GHD-ll-ww-hh-w

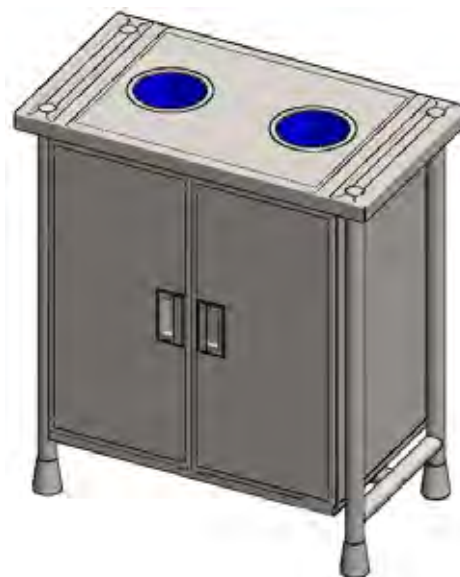
- ll is length of the dispenser (cm).
- ww is width of the dispenser (cm).
- hh is height of the dispenser (cm).
- w is the adder for front configuration (add W for wrapped item dispensing).

### Gown and Hood Dispensers

| Part Number    | LxWxH (mm)  | LxWxH (inch) | Front Config |
|----------------|-------------|--------------|--------------|
| GHD-35-25-75   | 350x250x750 | 14x10x29.5   | Folded       |
| GHD-41-31-75   | 410x310x750 | 16x12x30     | Folded       |
| GHD-30-24-80-W | 300x240x800 | 12x9.5x32    | Wrapped      |

## Disposal / Recycle Cabinets

Cabinets are designed to provide efficient disposal / recycle of cleanroom items. Units are electropolished 304 stainless steel with removable waste bins.



### Ordering Information

Part number example: DRC-ll-ww-hh

- ll is length of the dispenser (cm).
- ww is width of the dispenser (cm).
- hh is height of the dispenser (cm).

### Disposal / Recycle Cabinets

| Part Number  | LxWxH (mm)  | LxWxH (inch) |
|--------------|-------------|--------------|
| DRC-80-43-90 | 800x430x900 | 32x17x36     |

# Clean Room Equipment & Furniture

## Wipes & Bottle Holders

Wall mounted dispensers efficiently hold wipes and bottles. Units are electropolished 304 stainless steel.

### Ordering Information

Part number example: WBH-III-www-hhh

- III is length of the dispenser (mm).
- www is width of the dispenser (mm).
- hhh is height of the dispenser (mm).



### Wipes & Bottle Holders

| Part Number     | LxWxH (mm)  | LxWxH (inch) |
|-----------------|-------------|--------------|
| WBH-395-115-310 | 395x115x310 | 16x4.5x12    |

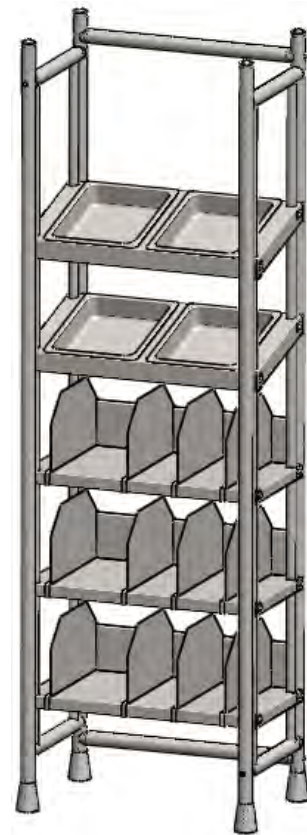
## Tray & Shelf Units

Tray & shelf units are designed to provide efficient storing of small cleanroom items. Units are electropolished 304 stainless steel with removable trays and dividers.

### Ordering Information

Part number example: TSU-III-www-hhh

- III is length of the dispenser (mm).
- www is width of the dispenser (mm).
- hhh is height of the dispenser (mm).



### Tray & Shelf Units

| Part Number      | LxWxH (mm)   | LxWxH (inch) |
|------------------|--------------|--------------|
| TSU-655-400-2100 | 655x400x2100 | 26x16x82     |

# Clean Room Equipment & Furniture

## Clean Room Benches

Benches are designed to assist in putting on shoe covers and reduce bending. Units are electropolished 304 stainless steel with features allowing more than one bench to be connected together.

### Ordering Information

Part number example: BEN-lll-ww-hh-s

- lll is length of the bench (cm).
- ww is width of the bench (cm).
- hh is height of the bench (cm).
- s is the adder for bench configuration (add S for swing over).



### Clean Room Benches

| Part Number     | LxWxH (mm)   | LxWxH (inch) | Bench Config |
|-----------------|--------------|--------------|--------------|
| BEN-085-34-45-S | 850x340x450  | 34x14x18     | Swing Over   |
| BEN-060-35-45   | 600x350x450  | 24x14x18     | Basic        |
| BEN-080-35-45   | 800x350x450  | 32x14x18     | Basic        |
| BEN-100-35-45   | 1000x350x450 | 40x14x18     | Basic        |
| BEN-120-35-45   | 1200x350x450 | 48x14x18     | Basic        |
| BEN-140-35-45   | 1400x350x450 | 55x14x18     | Basic        |
| BEN-160-35-45   | 1600x350x450 | 64x14x18     | Basic        |
| BEN-180-35-45   | 1800x350x450 | 72x14x18     | Basic        |



# Clean Room Equipment & Furniture

## Rod Type Benches

Benches are designed to be a ultra-clean for use in critical areas. Units are electropolished 304 stainless steel with rod type construction.

### Ordering Information

Part number example: RTB-lll-ww-hh

- lll is length of the bench (cm).
- ww is width of the bench (cm).
- hh is height of the bench (cm).



### Rod Type Benches

| Part Number   | LxWxH (mm)   | LxWxH (inch) |
|---------------|--------------|--------------|
| RTB-080-37-45 | 800x370x450  | 32x15x18     |
| RTB-100-37-45 | 1000x370x450 | 40x15x18     |
| RTB-120-37-45 | 1200x370x450 | 48x15x18     |
| RTB-140-37-45 | 1400x370x450 | 55x15x18     |





# Clean Room Equipment & Furniture

## Stainless Steel Stools

Stools are designed to be a totally stainless steel solution. Units are electropolished 304 stainless steel and may be provided with fixed height or adjustable. Fixed height stools have 600 mm round seats and are 500 mm high. Adjustable stools can be set between 450 mm and 580 mm high. Stools are available with gliders, casters or feet to fix the stool to the floor.

### Ordering Information

Part number example: SSS-f-a

- f is the adder for foot configuration (add C for casters, G for Gliders and F for fixed to floor).
- a is the adder for adjustable configuration (add A for adjustable height stool).

### Stainless Steel Stools

| Part Number | Base/Feet      | Height     | LxWxH (mm)  | LxWxH (inch) |
|-------------|----------------|------------|-------------|--------------|
| SSS-C       | Casters        | Fixed      | 600x600x500 | 24x24x20     |
| SSS-F       | Fixed to Floor | Fixed      | 600x600x500 | 24x24x20     |
| SSS-G       | Gliders        | Fixed      | 600x600x500 | 24x24x20     |
| SSS-C-A     | Casters        | Adjustable | 600x600x500 | 24x24x20     |
| SSS-F-A     | Fixed to Floor | Adjustable | 600x600x500 | 24x24x20     |
| SSS-G-A     | Gliders        | Adjustable | 600x600x500 | 24x24x20     |



# Clean Room Equipment & Furniture

## Heavy Duty Tables

Tables are designed strong with solid tops and leveler legs. Tables are 760 mm wide x 900 mm high. Units are electropolished 304 stainless steel and may be provided with optional perforated top, bottom shelf, top shelf, drawer unit, sliding keyboard holder, flat screen holder and/or casters.

### Ordering Information

Part number example: HDT-lll-pbtndksc

- lll is length of the table (cm).
  - p is the adder for perforated top (add P).
  - b is the adder for bottom shelf (add B).
  - t is the adder for top shelf (add T).
  - nd is the adder for drawer unit where n is the number of drawers (add 1D, 2D or 3D).
  - k is the adder for keyboard holder (add K).
  - s is the adder for flat screen holder (add S).
  - c is the adder for feet configuration (add C for casters and L for levelers with covers).
- If omitted, tables will be supplied with adjustable gliders.



### Heavy Duty Tables - Solid Top w/Gliders

| Part Number | Top   | Shlf | Dwr  | Kybrd / Flt Scrn | LxWxH (mm)   | LxWxH (inch) | Base / Feet |
|-------------|-------|------|------|------------------|--------------|--------------|-------------|
| HDT-060     | Solid | none | none | none             | 600x760x900  | 24x30x36     | Glider      |
| HDT-070     | Solid | none | none | none             | 700x760x900  | 28x30x36     | Glider      |
| HDT-080     | Solid | none | none | none             | 800x760x900  | 32x30x36     | Glider      |
| HDT-090     | Solid | none | none | none             | 900x760x900  | 36x30x36     | Glider      |
| HDT-100     | Solid | none | none | none             | 1000x760x900 | 40x30x36     | Glider      |
| HDT-110     | Solid | none | none | none             | 1100x760x900 | 44x30x36     | Glider      |
| HDT-120-L   | Solid | none | none | none             | 1200x760x900 | 48x30x36     | Leveler     |
| HDT-130-L   | Solid | none | none | none             | 1300x760x900 | 52x30x36     | Leveler     |
| HDT-140-L   | Solid | none | none | none             | 1400x760x900 | 55x30x36     | Leveler     |
| HDT-150-L   | Solid | none | none | none             | 1500x760x900 | 59x30x36     | Leveler     |
| HDT-160-L   | Solid | none | none | none             | 1600x760x900 | 63x30x36     | Leveler     |
| HDT-170-L   | Solid | none | none | none             | 1700x760x900 | 67x30x36     | Leveler     |
| HDT-180-L   | Solid | none | none | none             | 1800x760x900 | 71x30x36     | Leveler     |
| HDT-190-L   | Solid | none | none | none             | 1900x760x900 | 75x30x36     | Leveler     |
| HDT-200-L   | Solid | none | none | none             | 2000x760x900 | 79x30x36     | Leveler     |

# Clean Room Equipment & Furniture

## Heavy Duty Tables - Perforated Top w/Levelers and Covers

| Part Number | Top  | Shlf | Dwr  | Kybrd / Flt Scrn | LxWxH (mm)   | LxWxH (inch) | Base / Feet |
|-------------|------|------|------|------------------|--------------|--------------|-------------|
| HDT-060-P   | Perf | none | none | none             | 600x760x900  | 24x30x36     | Glider      |
| HDT-070-P   | Perf | none | none | none             | 700x760x900  | 28x30x36     | Glider      |
| HDT-080-P   | Perf | none | none | none             | 800x760x900  | 32x30x36     | Glider      |
| HDT-090-P   | Perf | none | none | none             | 900x760x900  | 36x30x36     | Glider      |
| HDT-100-P   | Perf | none | none | none             | 1000x760x900 | 40x30x36     | Glider      |
| HDT-110-P   | Perf | none | none | none             | 1100x760x900 | 44x30x36     | Glider      |
| HDT-120-PL  | Perf | none | none | none             | 1200x760x900 | 48x30x36     | Leveler     |
| HDT-130-PL  | Perf | none | none | none             | 1300x760x900 | 52x30x36     | Leveler     |
| HDT-140-PL  | Perf | none | none | none             | 1400x760x900 | 55x30x36     | Leveler     |
| HDT-150-PL  | Perf | none | none | none             | 1500x760x900 | 59x30x36     | Leveler     |
| HDT-160-PL  | Perf | none | none | none             | 1600x760x900 | 63x30x36     | Leveler     |
| HDT-170-PL  | Perf | none | none | none             | 1700x760x900 | 67x30x36     | Leveler     |
| HDT-180-PL  | Perf | none | none | none             | 1800x760x900 | 71x30x36     | Leveler     |
| HDT-190-PL  | Perf | none | none | none             | 1900x760x900 | 75x30x36     | Leveler     |
| HDT-200-PL  | Perf | none | none | none             | 2000x760x900 | 79x30x36     | Leveler     |

## Heavy Duty Tables - w/Accessories

| Part Number  | Top   | Shlf | Dwr  | Kybrd / Flt Scrn | LxWxH (mm)   | LxWxH (inch) | Base / Feet |
|--------------|-------|------|------|------------------|--------------|--------------|-------------|
| HDT-060-T2D  | Solid | Top  | 2    | none             | 600x760x900  | 24x30x36     | Glider      |
| HDT-080-B    | Solid | Bot  | none | none             | 800x760x900  | 32x30x36     | Glider      |
| HDT-120-1DC  | Solid | none | 1    | none             | 1200x760x900 | 48x30x36     | Caster      |
| HDT-150-2D   | Solid | none | 2    | none             | 1500x760x900 | 59x30x36     | Glider      |
| HDT-180-T3DL | Solid | Top  | 3    | none             | 1800x760x900 | 71x30x36     | Leveler     |
| HDT-150-1DKS | Solid | none | 1    | Kb&FS            | 1500x760x900 | 59x30x36     | Glider      |
| HDT-200-BTL  | Solid | B&T  | none | none             | 2000x760x900 | 79x30x36     | Leveler     |

## Drawer Units

Fully extendable drawer units with locks can be supplied for most any table and can be connected anywhere underneath a Heavy Duty Table. Units are electropolished 304 stainless steel.

### Ordering Information

Part number example: DU-n

- n is the adder for number of drawers (add 1, 2 or 3).
- Example: DU-3 dictates a 3-drawer unit.



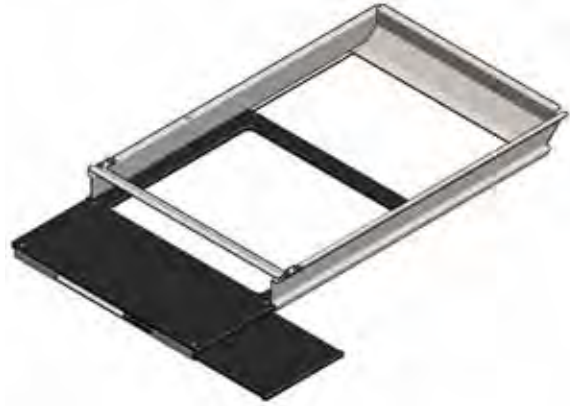
# Clean Room Equipment & Furniture

## Keyboard Holders

Sliding keyboard holders can be supplied for most any table and can be connected anywhere underneath a Heavy Duty Table. Units are electropolished 304 stainless steel.

### ***Ordering Information***

Part number example: KH



## Mobile Laptop Workstations

Mobile laptop workstations are designed with weighted bases and casters with brakes. Units are electropolished 304 stainless steel with slots for securing laptop.

### ***Ordering Information***

Part number example: MLW



## Flat Screen - Keyboard Workstations

Flat screen - keyboard workstations are designed to support flat screen, keyboard and mouse. Units are electropolished 304 stainless steel with adjustable height.

### ***Ordering Information***

Part number example: FSKW



# Clean Room Equipment & Furniture

## Gown Racks

Gown racks are designed to align hangers for optimum function and appearance. Racks are 567 mm wide and can be supplied in multiple heights and configurations. Units are electropolished 304 stainless steel and may be provided with optional leveler legs, casters.



### Ordering Information

Part number example: GR-lcw-nn-hhhh

- l is the adder for levelers (add L).
- c is the adder for casters (add C).
- w is the adder for wall mount (add W).
- nn is number of hangers.
- hhhh is the height of the rack (mm).

### Gown Racks

| Part Number  | Configuration | Hanger Count | LxWxH (mm)    | LxWxH (inch) |
|--------------|---------------|--------------|---------------|--------------|
| GR-L-08-2100 | Leveler Legs  | 8            | 585x567x2100  | 23x22x83     |
| GR-L-16-2100 | Leveler Legs  | 16           | 947x567x2100  | 37x22x83     |
| GR-L-24-2100 | Leveler Legs  | 24           | 1328x567x2100 | 52x22x83     |
| GR-L-32-2100 | Leveler Legs  | 32           | 1709x567x2100 | 67x22x83     |
| GR-L-40-2100 | Leveler Legs  | 40           | 2090x567x2100 | 82x22x83     |
| GR-C-08-2100 | Casters       | 8            | 585x567x2100  | 23x22x83     |
| GR-C-16-2100 | Casters       | 16           | 947x567x2100  | 37x22x83     |
| GR-C-24-2100 | Casters       | 24           | 1328x567x2100 | 52x22x83     |
| GR-C-32-2100 | Casters       | 32           | 1709x567x2100 | 67x22x83     |
| GR-C-40-2100 | Casters       | 40           | 2090x567x2100 | 82x22x83     |
| GR-L-08-1750 | Leveler Legs  | 8            | 585x567x1750  | 23x22x69     |
| GR-L-16-1750 | Leveler Legs  | 16           | 947x567x1750  | 37x22x69     |
| GR-L-24-1750 | Leveler Legs  | 24           | 1328x567x1750 | 52x22x69     |
| GR-L-32-1750 | Leveler Legs  | 32           | 1709x567x1750 | 67x22x69     |
| GR-L-40-1750 | Leveler Legs  | 40           | 2090x567x1750 | 82x22x69     |
| GR-C-08-1750 | Casters       | 8            | 585x567x1750  | 23x22x69     |
| GR-C-16-1750 | Casters       | 16           | 947x567x1750  | 37x22x69     |
| GR-C-24-1750 | Casters       | 24           | 1328x567x1750 | 52x22x69     |
| GR-C-32-1750 | Casters       | 32           | 1709x567x1750 | 67x22x69     |
| GR-C-40-1750 | Casters       | 40           | 2090x567x1750 | 82x22x69     |
| GR-W-08-0470 | Wall Mount    | 8            | 585x468x470   | 23x19x19     |
| GR-W-16-0470 | Wall Mount    | 16           | 947x468x470   | 37x19x19     |
| GR-W-24-0470 | Wall Mount    | 24           | 1328x468x470  | 52x19x19     |
| GR-W-32-0470 | Wall Mount    | 32           | 1709x468x470  | 67x19x19     |
| GR-W-40-0470 | Wall Mount    | 40           | 2090x468x470  | 82x19x19     |

# Clean Room Equipment & Furniture

## Cleanroom Hanger

Cleanroom hangers are designed strong to avoid deformation and may be supplied individually (gown racks are supplied with hangers). Units are electropolished 304 stainless steel 430 mm long x 6 mm wide x 185 mm high.



### Ordering Information

Part number example: CH

## Waste Receptacles

Waste receptacles are designed to hold bin liner in place and with large openings. Units are electropolished 304 stainless steel, 355 mm in diameter, and may be provided free standing on casters, floor, bench or wall mounted.



### Ordering Information

Part number example: WR-bcfw

- c is the adder for casters (add C).
- f is the adder for floor mount (add F).
- b is the adder for bench mount (add B).
- w is the adder for wall mount (add W).

### Waste Receptacles

| Part Number | Configuration | LxWxH (mm)  | LxWxH (inch) |
|-------------|---------------|-------------|--------------|
| WR-B        | Bench Mount   | 355x355x450 | 14x14x18     |
| WR-C        | Caster Mount  | 355x355x650 | 14x14x26     |
| WR-F        | Floor Mount   | 355x355x700 | 14x14x28     |
| WR-W        | Wall Mount    | 355x355x450 | 14x14x18     |



# Clean Room Equipment & Furniture

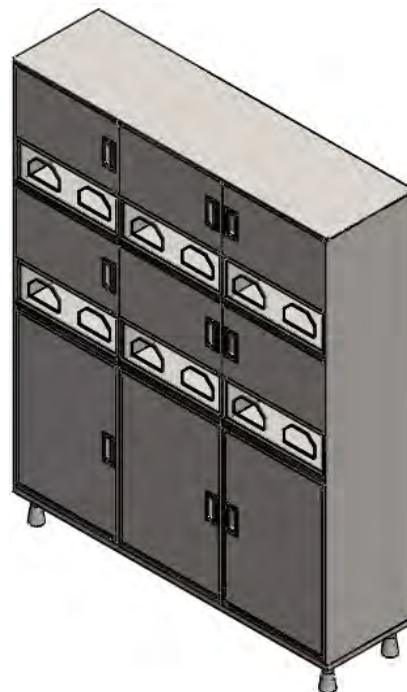
## Gownroom Feeder Cabinets

Feed cabinets are designed to support the gowning operation with front access doors for reloading on the top and storage or disposal on the bottom. Units are electropolished 304 stainless steel, 400 mm wide x 2000 mm high.

### Ordering Information

Part number example: GFC-nn

- nn is the adder for dispense slot count.
- Example: GFC-08 dictates a 8-slot feeder cabinet (1000 mm long).
- Example: GFC-12 dictates a 12-slot feeder cabinet (1500 mm long).



### Gownroom Feeder Cabinets

| Part Number | Slot Count | LxWxH (mm)    | LxWxH (inch) |
|-------------|------------|---------------|--------------|
| GFC-04      | 4          | 500x400x2000  | 20x16x79     |
| GFC-08      | 8          | 1000x400x2000 | 40x16x79     |
| GFC-12      | 12         | 1500x400x2000 | 60x16x79     |

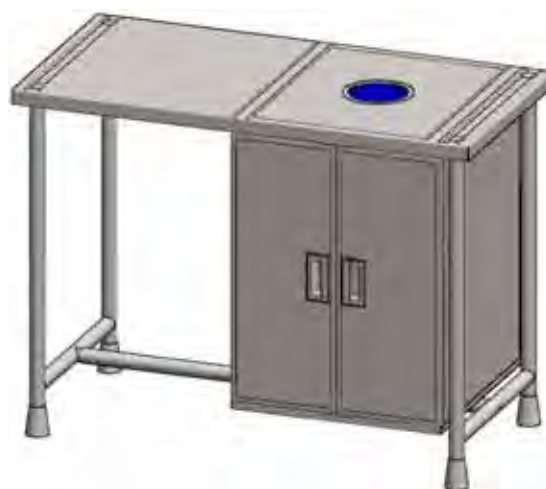
## Wipe Down Tables

Wipedown tables are designed to support the wipe-down procedure with a waste hole in the table top and removeable waste bin inside the cabinet. Units are electropolished 304 stainless steel, 600 mm wide x 900 mm high.

### Ordering Information

Part number example: WDT-III

- III is the table length (cm)..



### Wipe Down Tables

| Part Number | LxWxH (mm)   | LxWxH (inch) |
|-------------|--------------|--------------|
| WDT-070     | 700x600x900  | 28x24x36     |
| WDT-090     | 900x600x900  | 36x24x36     |
| WDT-120     | 1200x600x920 | 48x24x36     |

# Clean Room Equipment & Furniture

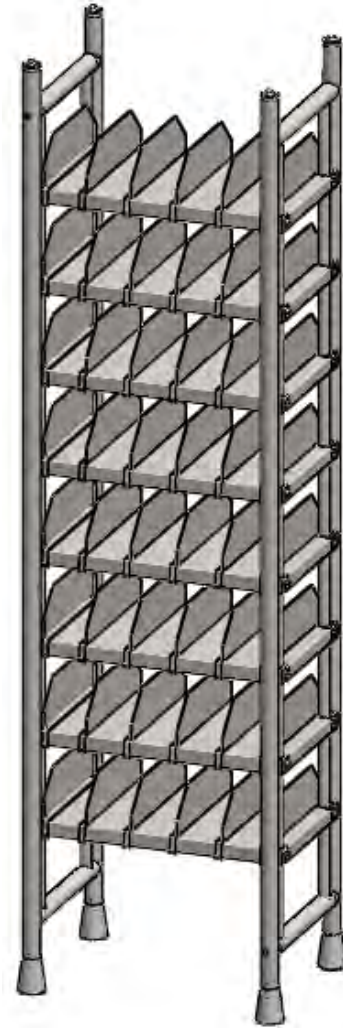
## Modular Bootie Racks

Modular bootie racks are designed with leveler legs and support for a variety of shelf lengths and compartments counts. Units are electropolished 304 stainless steel, 400 mm wide x 2100 mm high.

### Ordering Information

Part number example: MBR-nn

- nn is the adder for compartment count.



### Modular Bootie Racks

| Part Number | Comprtmtnt Count | LxWxH (mm)   | LxWxH (inch) |
|-------------|------------------|--------------|--------------|
| MBR-16      | 16               | 300x400x2100 | 12x16x83     |
| MBR-24      | 24               | 400x400x2100 | 16x16x83     |
| MBR-32      | 32               | 483x400x2100 | 19x16x83     |
| MBR-40      | 40               | 583x400x2100 | 23x16x83     |
| MBR-48      | 48               | 683x400x2100 | 27x16x83     |
| MBR-56      | 56               | 783x400x2100 | 31x16x83     |



# Clean Room Equipment & Furniture

## Storage Cabinets

Storage cabinets are designed with internal shelves. Units are electropolished 304 stainless steel and may be provided sloping roof and with 1, 2 or 4 doors. Doors may be stainless or glass, hinged or sliding designs. Cabinets may be wall mounted, have leveler legs or have casters.



### Ordering Information

Part number example: SCT-lll-www-hhh-nsm-v-clw

- t is the adder for sloping roof.
- lll is length of the cabinet (cm).
- www is length of the cabinet (cm).
- hhh is length of the cabinet (cm).
- n is the number of doors.
- s is the door style (H for hinged, S for sliding).
- m is the door material (M for stainless, G for tempered glass).
- v is the number of shelves.
- c is the adder for casters (add C).
- l is the adder for leveler legs (add L).
- w is the adder for wall mount (add W).

### Storage Cabinets

| Part Number             | Roof   | LxWxH (mm)    | LxWxH (inch) | Door        | Shelves | Feet / Mount      |
|-------------------------|--------|---------------|--------------|-------------|---------|-------------------|
| SCT-100-038-200-4HM-6-L | Sloped | 1000x380x2000 | 40x15x79     | 4 SS Hinged | 6       | Levelers w/covers |
| SCT-120-045-200-4HM-6-L | Sloped | 1200x450x2000 | 48x18x79     | 4 SS Hinged | 6       | Levelers w/covers |
| SC-120-060-210-2HM-6-L  | Flat   | 1200x600x2100 | 48x24x83     | 2 SS Hinged | 6       | Levelers w/covers |
| SC-120-060-210-2HM-6-C  | Flat   | 1200x600x2100 | 48x24x83     | 2 SS Hinged | 6       | Casters           |
| SC-090-060-210-2HM-4-L  | Flat   | 900x600x2100  | 36x24x83     | 2 SS Hinged | 4       | Levelers w/covers |
| SC-090-060-210-2HM-4-C  | Flat   | 900x600x2100  | 36x24x83     | 2 SS Hinged | 4       | Casters           |
| SC-091-048-150-2HM-3-L  | Flat   | 910x483x1500  | 36x19x60     | 2 SS Hinged | 3       | Levelers w/covers |
| SC-091-048-150-2HM-3-C  | Flat   | 910x483x1500  | 36x19x60     | 2 SS Hinged | 3       | Casters           |

# Clean Room Equipment & Furniture

## **Storage Cabinets**

| <b>Part Number</b>     | <b>Roof</b> | <b>LxWxH (mm)</b> | <b>LxWxH (inch)</b> | <b>Door</b>    | <b>Shelves</b> | <b>Feet / Mount</b> |
|------------------------|-------------|-------------------|---------------------|----------------|----------------|---------------------|
| SC-150-060-210-2HM-3-L | Flat        | 1500x600x2100     | 59x24x83            | 2 SS Hinged    | 3              | Levelers w/covers   |
| SC-150-060-210-2HM-3-C | Flat        | 1500x600x2100     | 59x24x83            | 2 SS Hinged    | 3              | Casters             |
| SC-066-054-210-2HG-4-L | Flat        | 660x540x2100      | 26x21x83            | 2 Glass Hinged | 4              | Levelers w/covers   |
| SC-066-054-210-2HG-4-C | Flat        | 660x540x2100      | 26x21x83            | 2 Glass Hinged | 4              | Casters             |
| SC-139-060-226-4SM-6-L | Flat        | 1390x600x2260     | 55x24x88            | 4 SS Sliding   | 6              | Levelers w/covers   |
| SC-139-060-226-4SM-6-C | Flat        | 1390x600x2260     | 55x24x88            | 4 SS Sliding   | 6              | Casters             |
| SC-046-030-800-1HM-3-W | Flat        | 460x300x800       | 18x12x32            | 1 SS Hinged    | 3              | Wall mount          |
| SC-092-030-800-2HM-3-W | Flat        | 920x300x800       | 36x12x32            | 2 SS Hinged    | 3              | Wall mount          |

# Clean Room Equipment & Furniture

## Soiled Garment Cabinets

Soiled garment cabinets are designed with leveler legs, a flap at the top for disposal of soiled garments and latched door for collection. Units are electropolished 304 stainless steel and may be provided sloping roof.



### Ordering Information

Part number example: SGCT-III-www-hhh

- t is the adder for sloping roof (add T).
- III is length of the cabinet (cm).
- www is length of the cabinet (cm).
- hhh is length of the cabinet (cm).

### Soiled Garment Cabinets

| Part Number      | Top    | LxWxH (mm)   | LxWxH (inch) |
|------------------|--------|--------------|--------------|
| SGC-066-054-195  | Flat   | 660x540x1950 | 26x21x77     |
| SGCT-066-054-215 | Sloped | 660x540x2150 | 26x21x85     |

## Cleanroom Cleaners Cabinets

Cleanroom cleaners cabinets are designed to store cleaning materials and equipment. One half of the cabinet has shelving and the other half does not. Units are electropolished 304 stainless steel and may be provided sloping roof.



### Ordering Information

Part number example: CCCT-III-www-hhh-c

- t is the adder for sloping roof (add T).
- III is length of the cabinet (cm).
- www is length of the cabinet (cm).
- hhh is length of the cabinet (cm).
- c is the adder for casters (add C).

### Cleanroom Cleaners Cabinets

| Part Number       | Top    | LxWxH (mm)    | LxWxH (inch) | Feet     |
|-------------------|--------|---------------|--------------|----------|
| CCCT-120-060-210  | Sloped | 1200x600x2100 | 48x24x83     | Levelers |
| CCC-120-060-210-C | Flat   | 1200x600x2160 | 48x24x85     | Casters  |

# Clean Room Equipment & Furniture

## 12 Drawer Cabinet

12 drawer cabinets are designed to on leveler legs. Units are electropolished 304 stainless steel.

### **Ordering Information**

Part number example: 12DC



### **12 Drawer Cabinet**

| Part Number | LxWxH (mm)   | LxWxH (inch) |
|-------------|--------------|--------------|
| 12DC        | 860x460x1354 | 34x18x53     |

## Cabinet with Drawers

Cabinets with drawers are designed to combine drawers and 2 doors with compartment storage inside, on leveler legs. Units are electropolished 304 stainless steel.

### **Ordering Information**

Part number example: CWD



### **Cabinet with Drawers**

| Part Number | LxWxH (mm)   | LxWxH (inch) |
|-------------|--------------|--------------|
| CWD         | 908x460x1673 | 36x18x66     |

# Clean Room Equipment & Furniture

## Mini Shelves

Mini shelves are designed to be wall mounted and may be solid or perforated. Shelves are 450 mm wide x 260 mm high. Units are electropolished 304 stainless steel and may be provided in a variety of lengths.

### Ordering Information

Part number example: MSpf-III

- p is the adder for perforated top (add P).
- f is the adder for fold down (add F).
- III is length of the shelf (cm).



### Mini Shelves

| Part Number | Top        | Configuration | LxWxH (mm)   | LxWxH (inch) |
|-------------|------------|---------------|--------------|--------------|
| MS-060      | Solid      | Standard      | 600x450x260  | 24x18x10     |
| MS-070      | Solid      | Standard      | 700x450x260  | 28x18x10     |
| MS-080      | Solid      | Standard      | 800x450x260  | 32x18x10     |
| MS-090      | Solid      | Standard      | 900x450x260  | 36x18x10     |
| MS-100      | Solid      | Standard      | 1000x450x260 | 40x18x10     |
| MS-110      | Solid      | Standard      | 1100x450x260 | 44x18x10     |
| MS-120      | Solid      | Standard      | 1200x450x260 | 48x18x10     |
| MPS-060     | Perforated | Standard      | 600x450x260  | 24x18x10     |
| MSP-070     | Perforated | Standard      | 700x450x260  | 28x18x10     |
| MSP-080     | Perforated | Standard      | 800x450x260  | 32x18x10     |
| MSP-090     | Perforated | Standard      | 900x450x260  | 36x18x10     |
| MSP-100     | Perforated | Standard      | 1000x450x260 | 40x18x10     |
| MSP-110     | Perforated | Standard      | 1100x450x260 | 44x18x10     |
| MSP-120     | Perforated | Standard      | 1200x450x260 | 48x18x10     |
| MSF-060     | Solid      | Fold-down     | 600x450x260  | 24x18x10     |
| MSF-070     | Solid      | Fold-down     | 700x450x260  | 28x18x10     |
| MSF-080     | Solid      | Fold-down     | 800x450x260  | 32x18x10     |
| MSF-090     | Solid      | Fold-down     | 900x450x260  | 36x18x10     |
| MSF-100     | Solid      | Fold-down     | 1000x450x260 | 40x18x10     |
| MSF-110     | Solid      | Fold-down     | 1100x450x260 | 44x18x10     |
| MSF-120     | Solid      | Fold-down     | 1200x450x260 | 48x18x10     |
| MSPF-060    | Perforated | Fold-down     | 600x450x260  | 24x18x10     |
| MSPF-070    | Perforated | Fold-down     | 700x450x260  | 28x18x10     |
| MSPF-080    | Perforated | Fold-down     | 800x450x260  | 32x18x10     |
| MSPF-090    | Perforated | Fold-down     | 900x450x260  | 36x18x10     |
| MSPF-100    | Perforated | Fold-down     | 1000x450x260 | 40x18x10     |
| MSPF-110    | Perforated | Fold-down     | 1100x450x260 | 44x18x10     |
| MSPF-120    | Perforated | Fold-down     | 1200x450x260 | 48x18x10     |

# Clean Room Equipment & Furniture

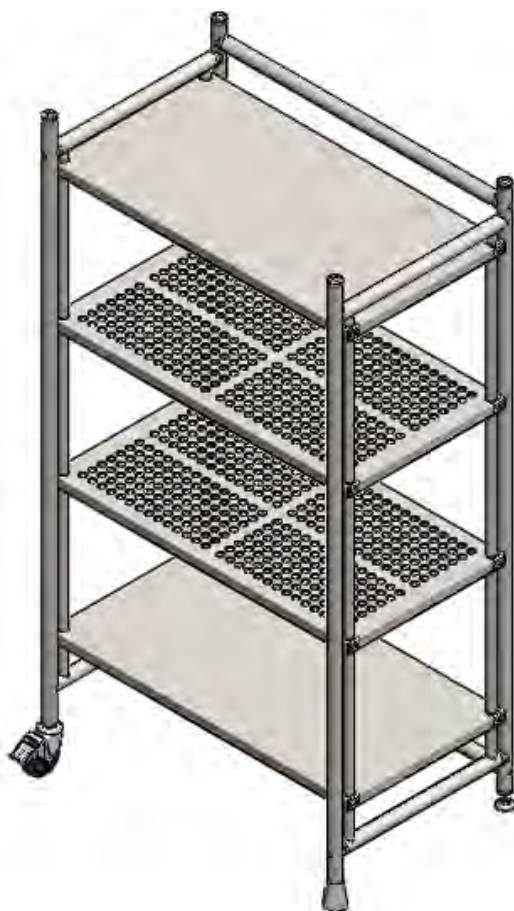
## Shelving Units

Shelving units are designed with removable and height adjustable shelves that may be either solid or perforated. Shelf units are 600 mm wide x 1900 mm high. Units are electropolished 304 stainless steel and may be provided in a variety of lengths with either leveler legs or casters.

### Ordering Information

Part number example: SUP-n-lll-c

- p is the adder for perforated top (add P).
- n is the number of shelves.
- lll is length of the shelf (cm).
- c is the adder for casters (add C).



### Shelving Units

| Part Number | Top        | Shelves | LxWxH (mm)    | LxWxH (inch) | Feet     |
|-------------|------------|---------|---------------|--------------|----------|
| SU-4-100    | Solid      | 4       | 1000x600x1900 | 40x24x75     | Levelers |
| SU-4-120    | Solid      | 4       | 1200x600x1900 | 48x24x75     | Levelers |
| SU-4-140    | Solid      | 4       | 1400x600x1900 | 56x24x75     | Levelers |
| SU-4-160    | Solid      | 4       | 1600x600x1900 | 63x24x75     | Levelers |
| SUP-4-100   | Perforated | 4       | 1000x600x1900 | 40x24x75     | Levelers |
| SUP-4-120   | Perforated | 4       | 1200x600x1900 | 48x24x75     | Levelers |
| SUP-4-140   | Perforated | 4       | 1400x600x1900 | 56x24x75     | Levelers |
| SUP-4-160   | Perforated | 4       | 1600x600x1900 | 63x24x75     | Levelers |
| SU-4-100-C  | Solid      | 4       | 1000x600x1900 | 40x24x75     | Casters  |
| SU-4-120-C  | Solid      | 4       | 1200x600x1900 | 48x24x75     | Casters  |
| SU-4-140-C  | Solid      | 4       | 1400x600x1900 | 56x24x75     | Casters  |
| SU-4-160-C  | Solid      | 4       | 1600x600x1900 | 63x24x75     | Casters  |
| SUP-4-100-C | Perforated | 4       | 1000x600x1900 | 40x24x75     | Casters  |
| SUP-4-120-C | Perforated | 4       | 1200x600x1900 | 48x24x75     | Casters  |
| SUP-4-140-C | Perforated | 4       | 1400x600x1900 | 56x24x75     | Casters  |
| SUP-4-160-C | Perforated | 4       | 1600x600x1900 | 63x24x75     | Casters  |

# Clean Room Equipment & Furniture

## Reticle Mask Racks

Reticle mask racks are designed with minimal footprint. Shelf units are 210 mm wide x 1900 mm high. Units are electropolished 304 stainless steel and may be provided in a variety of slot counts and are custom fit to the reticle mask case.

### Ordering Information

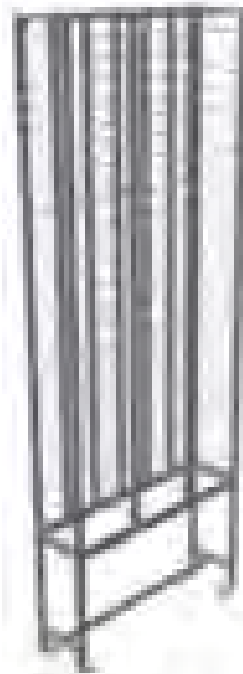
Part number example: RMR-nnn-s

- n is the number of slots.
- s is the adder for reticle mask case specifications (add full description).



### Reticle Mask Racks

| Part Number | Slots | LxWxH (mm)   | LxWxH (inch) | Reticle Mask Case Specs |
|-------------|-------|--------------|--------------|-------------------------|
| RMR-025-s   | 25    | 240x210x1910 | 9.5x8.5x75   | specify                 |
| RMR-050-s   | 50    | 478x210x1910 | 19x8.5x75    | specify                 |
| RMR-075-s   | 75    | 710x210x1910 | 28x8.5x75    | specify                 |
| RMR-100-s   | 100   | 946x210x1910 | 37x8.5x75    | specify                 |



# Clean Room Equipment & Furniture

## WIP Racks

WIP racks are designed store either 6-inch or 8-inch wafer boxes and SMIF pods. 6-inch WIP racks are 285 mm wide x 1920 mm high and 8-inch WIP racks are 330 mm wide x 1555 mm high. Units are electropolished 304 stainless steel and may be provided in a variety of lot counts.



### Ordering Information

Part number example: WIPR-s-nn

- s is the adder for wafer size.
- nn is the number of lots.

### WIP Racks

| Part Number | Wafer Size | Lots | LxWxH (mm)    | LxWxH (inch) |
|-------------|------------|------|---------------|--------------|
| WIPR-8-04   | 8-inch     | 4    | 468x330x1555  | 18.5x13x61   |
| WIPR-8-08   | 8-inch     | 8    | 831x330x1555  | 33x13x61     |
| WIPR-8-12   | 8-inch     | 12   | 1194x330x1555 | 47x13x61     |
| WIPR-8-16   | 8-inch     | 16   | 1557x330x1555 | 61x13x61     |
| WIPR-6-06   | 6-inch     | 6    | 300x285x1920  | 12x11.2x76   |
| WIPR-6-12   | 6-inch     | 12   | 550x285x1920  | 22x11.2x76   |
| WIPR-6-18   | 6-inch     | 18   | 800x285x1920  | 32x11.2x76   |
| WIPR-6-24   | 6-inch     | 24   | 1050x285x1920 | 42x11.2x76   |



# Clean Room Equipment & Furniture

## Wafer Transport Carts

Wafer transport carts are designed with tilted nest and integral vibration damping to transport wafer cassettes, wafer boxes, or SMIF pods. Units are electropolished 304 stainless steel and may be provided in a variety of lot counts.



### Ordering Information

Part number example: WTCcbpf-sss-n

- c is the adder for cassette (add C).
- b is the adder for box (add B).
- p is the adder for SMIF Pod (add P).
- f is the adder for FOUP / FOSB (add F).
- sss is the adder for wafer size (mm).
- n is the number of lots.

### Wafer Transport Carts

| Part Number | Container | Wafer  | Lots | LxWxH (mm)    | LxWxH (inch) |
|-------------|-----------|--------|------|---------------|--------------|
| WTCB-200-4  | Box       | 8-inch | 4    | 884x400x935   | 35x16x37     |
| WTCP-200-4  | SMIF Pod  | 8-inch | 4    | 884x400x935   | 35x16x37     |
| WTCB-200-6  | Box       | 8-inch | 6    | 884x470x1220  | 35x19x48     |
| WTCP-200-6  | SMIF Pod  | 8-inch | 6    | 884x470x1220  | 35x19x48     |
| WTCC-200-4  | Cassette  | 8-inch | 4    | 1010x750x1105 | 40x30x43     |
| WTCC-200-6  | Cassette  | 8-inch | 6    | 1400x750x1105 | 55x30x43     |
| WTCF-300-1  | FOUP/FOSB | 300mm  | 1    | 738x590x1231  | 29x23x49     |
| WTCF-300-2  | FOUP/FOSB | 300mm  | 2    | 1211x590x1231 | 48x23x49     |
| WTCF-300-4  | FOUP/FOSB | 300mm  | 4    | 1211x590x1231 | 48x23x49     |

# Clean Room Equipment & Furniture

## Tool Carts & Cabinets

Tool carts & cabinets are designed with raised edge tops, locks and locking casters. Carts have fully extending drawers and Cabinets have shelves with accessed via two vertical doors. Units are electropolished 304 stainless steel and may be provided in a variety of drawer and shelf counts.



### Ordering Information

Part number example: TCds-n

- d is the adder for drawers (add D).
- s is the adder for shelves (add S).
- n is the number of drawers or shelves.

### Tool Carts & Cabinets

| Part Number | Configuration | LxWxH (mm)   | LxWxH (inch) |
|-------------|---------------|--------------|--------------|
| TCD-5       | 5 Drawers     | 730x470x850  | 29x18.5x34   |
| TCS-6       | 6 Shelves     | 882x500x1100 | 35x20x43     |



# Clean Room Equipment & Furniture

## Step Ladders

Step ladders are designed with retractable casters (when mobile) allowing the unit to sit firmly on the floor when weight is applied. Units are electropolished 304 stainless steel and may be provided in a variety of step counts.

### Ordering Information

Part number example: SLM-n

- m is the adder for mobile (add M).
- n is the number of steps.



### Step Ladders

| Part Number | Configuration | Steps | LxWxH (mm)    | LxWxH (inch) |
|-------------|---------------|-------|---------------|--------------|
| SL-1        | Non-mobile    | 1     | 600x300x200   | 24x12x8      |
| SL-2        | Non-mobile    | 2     | 805x500x600   | 32x25x24     |
| SL-3        | Non-mobile    | 3     | 632x832x1509  | 25x33x60     |
| SL-4        | Non-mobile    | 4     | 900x1025x1713 | 36x40x68     |
| SL-5        | Non-mobile    | 5     | 800x1280x2000 | 32x51x79     |
| SLM-1       | Mobile        | 1     | 600x300x200   | 24x12x8      |
| SLM-2       | Mobile        | 2     | 805x500x600   | 32x25x24     |
| SLM-3       | Mobile        | 3     | 632x832x1509  | 25x33x60     |
| SLM-4       | Mobile        | 4     | 900x1025x1713 | 36x40x68     |
| SLM-5       | Mobile        | 5     | 800x1280x2000 | 32x51x79     |



# Clean Room Equipment & Furniture

## Carts

Carts are designed with solid or perforated shelves with raised edges and swivel casters with brakes. Units are electropolished 304 stainless steel and may be provided in a variety of shelf counts. Units are 550 mm wide x 990 mm high.



### Ordering Information

Part number example: CRTp-n-lll

- p is the adder for perforated shelf (add P).
- n is the number of shelves.
- lll is the length (mm).

### Carts

| Part Number | Configuration | Shelves | LxWxH (mm)  | LxWxH (inch) |
|-------------|---------------|---------|-------------|--------------|
| CRT-2-550   | Solid         | 2       | 550x550x990 | 22x22x39     |
| CRT-2-865   | Solid         | 2       | 865x550x990 | 34x22x39     |
| CRT-3-550   | Solid         | 3       | 550x550x990 | 22x22x39     |
| CRT-3-865   | Solid         | 3       | 865x550x990 | 34x22x39     |
| CRTP-2-550  | Perforated    | 2       | 550x550x990 | 22x22x39     |
| CRTP-2-865  | Perforated    | 2       | 865x550x990 | 34x22x39     |
| CRTP-3-550  | Perforated    | 3       | 550x550x990 | 22x22x39     |
| CRTP-3-865  | Perforated    | 3       | 865x550x990 | 34x22x39     |

# Clean Room Equipment & Furniture

## Particle Counter Transport Carts

Particle counter transport carts are designed for transporting particle sensing machines with vibration damping and optional telescopic arm. Units are electropolished 304 stainless steel and may be provided in a variety of lengths with or without perforated shelves. Units are 490 mm wide x 1000 mm high.



### Ordering Information

Part number example: PCTCp-a-111

- p is the adder for perforated shelf (add P).
- a is the adder for telescopic arm (add A).
- n is the number of shelves.
- 111 is the length (mm).

### Particle Counter Transport Carts

| Part Number | Shelves    | Arm | LxWxH (mm)   | LxWxH (inch) |
|-------------|------------|-----|--------------|--------------|
| PCTC-A-691  | Solid      | Yes | 691x490x1000 | 27x19x39     |
| PCTCP-691   | Perforated | No  | 691x490x1000 | 27x19x39     |
| PCTC-917    | Solid      | No  | 917x490x1000 | 36x19x39     |

## Chemical Transport Carts

Chemical transport carts are designed with deep shelves/trays with removable lids and cut-outs sized for commonly used chemical containers. Units are electropolished 316 stainless steel and may be provided with vibration damping. Units are 1148 mm long x 558 mm wide x 1141 mm high.



### Ordering Information

Part number example: CTC-v

- v is the adder for vibration damping (add V).
- Example: CTC dictates a chemical transport cart without vibration damping.
- Example: CTC-V dictates a chemical transport cart with vibration damping.